

Baxter

Welch Allyn
RetinaVue

CARE DELIVERY MODEL



WELCH ALLYN RETINAVUE NETWORK SOFTWARE

ENSURE SECURE TRANSFER OF
ENCRYPTED RETINAL IMAGES AND
MANAGEMENT OF EXAM DATA.

RetinaVue Network is a turnkey teleretinal software application designed to meet your workflow and administrative needs. It includes comprehensive population health management and quality reporting tools to more effectively manage retinal exam data.

To streamline documentation, fully integrated, bi-directional interfaces with EMRs including **Allscripts**, **athenahealth**, **Cerner**, **Epic**, **NextGen** platforms and many others are offered. Place retinal exam orders and automatically access diagnostic reports from your EMR.



MADE FOR PRIMARY CARE SETTINGS

Designed to scale with your organization

- Quickly schedule patients
- Securely transmit retinal exams
- View clear statistics
- Easily find diagnostic reports
- Manage clinics and users in one place

The **RetinaVue** Network software enables efficient and secure clinical workflows for diabetic retinal exams in primary care.

RetinaVue Network software plans include:



End-to-End Security

- HIPAA/HITECH Compliant
- SOC-2 Type II Certification
 - Hosted on secure **Microsoft Azure** Cloud
 - Transaction logging and 24/7 server monitoring
 - Comprehensive data backup and recovery



Ease-of-Use

- Simple integration with **RetinaVue** Imagers
- Ongoing software updates and improvements
- Access to our dedicated support team
- Diagnostic tools to improve image readability



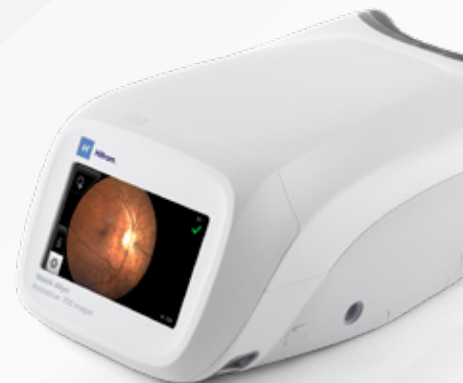
Scalability

- Flexible and scalable cloud-based network
- Accurate ICD-10 coding to support HCC documentation for improved care coordination and risk-adjustment coverage
- Repository for accurate reimbursement and billing documentation



Connectivity

- Wireless **RetinaVue** Imager connectivity for streamlined workflows
- Standard HL7 bi-directional EMR connectivity
- Continuous, real-time access to clinical statistics and diagnostic insights



For more information, please visit [RetinaVue.com](https://www.RetinaVue.com).

Hill-Rom reserves the right to make changes without notice in design, specifications and models. The only warranty Hill-Rom makes is the express written warranty extended on the sale or rental of its products.

Baxter, Hillrom, RetinaVue and Welch Allyn are trademarks of Baxter International Inc. or its subsidiaries.

Allscripts is a registered trademark of Allscripts Software, LLC.

Athenahealth is a registered trademark of Athenahealth, Inc.

Azure and Microsoft are trademarks of Microsoft Corporation.

Cerner is a registered trademark of Cerner Innovation, Inc.

Epic is a registered trademark of Epic Systems Corp.

Nextgen is a registered trademark of NXGN Management, LLC.

ALL RIGHTS RESERVED. US-FLC147-230030 V1 04/23